

Spintly

Fi-B Gateway

Spintly Gateway with its elegant design bridges the gap between BLE and Cloud via Wi-Fi/Ethernet. A smart gateway that enables communication with the Spintly devices and Spintly cloud to safely store your access data.



Multi Functionality Gateway

With Wi-Fi, Ethernet And PoE Support

Spintly Fi-B Gateway is designed to support Wi-Fi, Ethernet, and PoE (Power over Ethernet) functionality providing robust networking capabilities.

- Wi-Fi Support :**
It allows wireless connectivity, enabling devices to connect to the local network through Wi-Fi
- Ethernet Support :**
The gateway connects and manages devices within a local area network over Ethernet connections.
- PoE Support :**
It delivers power over Ethernet cables to PoE-compatible devices, simplifying installation and reducing the need for separate power sources

Security

- AES128 bit encryption on Bluetooth mesh communication**
Spintly access control system uses AES-128 bit encryption for secure Bluetooth Mesh communication, safeguarding network data.
- TLS 1.2 for communication between Spintly cloud and gateway**
Spintly's access control system employs TLS 1.2 encryption to secure communication between the cloud and the gateway, guaranteeing robust data protection and system integrity.

Spintly Gateway Features

- 1 BLE Mesh Networking**
With BLE Mesh, devices can communicate with one another over an extended range, enhancing the overall performance and coverage of your access control network.
- 2 Supports for OTA (Over-The-Air) updates**
Spintly FI-B Gateway allows for Over-The-Air (OTA) updates. This means that firmware and software updates can be applied remotely without the need for physical access or manual intervention. OTA updates ensure that the gateway remains up-to-date with the latest features, security patches, and improvements.
- 3 Built in RTC and NTP support**
Spintly FI-B Gateway is equipped with a Real-Time Clock (RTC) and supports Network Time Protocol (NTP). This ensures that the system maintains accurate and synchronized time. Precise timekeeping is essential for access control systems, as it helps in tracking and managing access events accurately.
- 4 Supports 100 BLE mesh nodes**
Spintly FI-B Gateway has the capability to support up to 100 BLE mesh nodes. In practical terms, it can manage and coordinate a significant number of BLE-enabled devices within its network. This scalability makes it suitable for larger access control deployments.
- 5 Long Range BLE Radio**
Spintly FI-B Gateway is equipped with a long-range BLE radio to communicate with BLE devices over an extended distance. This feature is particularly valuable for covering larger areas or ensuring reliable communication in environments with obstacles or interference.
- 6 Web-based UI for Configuration**
Spintly FI-B Gateway provides a user-friendly, web-based User Interface (UI) for configuration. This makes it easy for administrators to set up and manage the gateway's settings and parameters. Through the web-based UI, you can configure network settings, access control policies, and monitor the performance of the gateway in real-time.



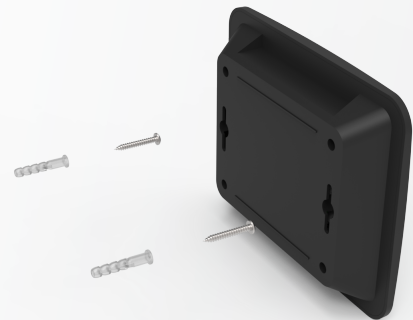
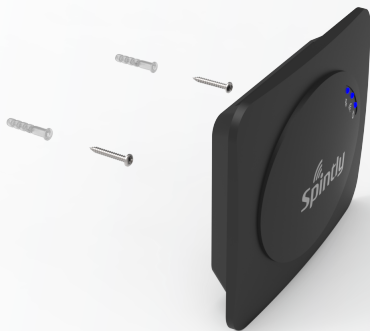
Models & Specifications

Product Variant	Fi-B gateway		
Model Name	SG-020	SG-021	SG-022
Input	<ul style="list-style-type: none">Power<ul style="list-style-type: none">Voltage ratings : 12/24 DCPower consumption : 2.4W max at 12V		
BLE Communication Distance	250m LOS		
Operating System	Linux		
Wi-Fi Standard	IEEE 802.11b/g/n	IEEE 802.11b/g/n/ac	IEEE 802.11b/g/n/ac
Processor	ARM11 core @ 1GHz	Quad Core Cortex-A72 64bit @ 1.5GHz	Quad Core Cortex-A72 64bit @ 1.5GHz
RAM	512MB	4GB	2GB
Ethernet LAN	N/A	Yes (RJ45)	Yes (RJ45)
Power over Ethernet (PoE)	N/A	N/A	Yes (IEEE 802.3af15W)
Enclosure	Dimensions : 160L X 130W X 35D mm Weight : 90g Housing material : ABS Wall and ceiling mountable Black (matte + glossy)		
Environmental	Operating temp: -25 to +85 degree C Operating humidity : 5% to 95% relative, non-condensing		
Compliance	FCC certified CE certified RoHS compliant		

Installation

Wall and Ceiling Mountable

The ability to mount the gateway on both walls and ceilings ensures that you can choose the most appropriate location for the gateway, optimizing access control coverage and enhancing the security depending on the layout of the facility



Applications



Commercial Spaces



Educational Institutions



Fitness Centers



Coworking spaces



Warehouses



Manufacturing and Industrial Sites

Contact Us



www.spintly.com
sales@spintly.com