



# Spintly

## 3-in-One Access Control Unit

**SMACC-FP**  
Model No : SF-01X



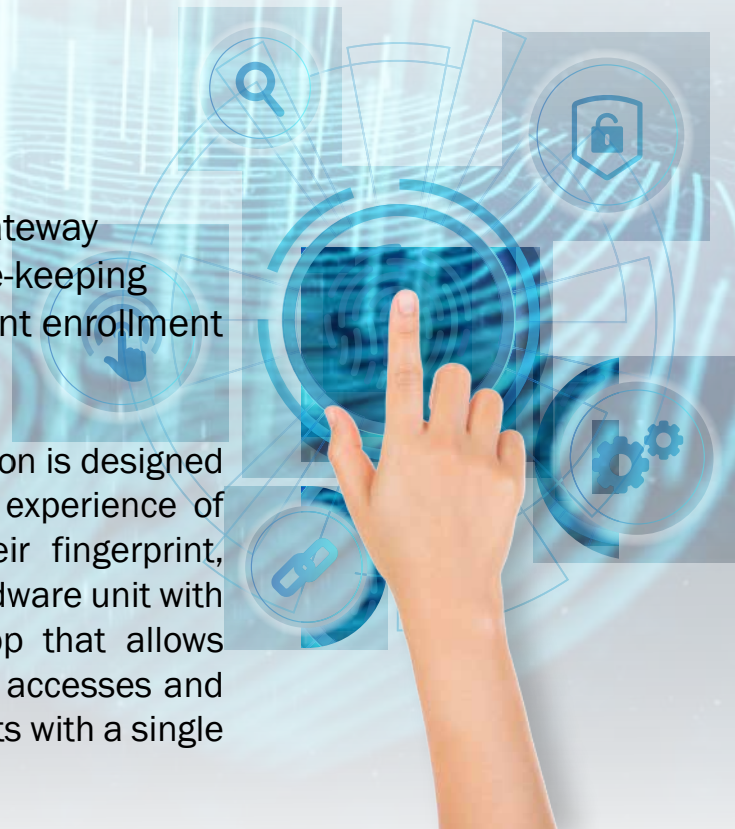
**Spintly's 3-in-1 fingerprint unit** is a flexible, modular and scalable approach to upgrade your regular doors to smart doors. A smart, elegant, and efficient solution to manage your access points at your workplace or commercial properties. This unit allows you the flexibility of choosing multiple access methods according to your needs.

### FEATURES

- BLE-Mesh (Bluetooth Low Energy) based
- Works with NFC tags @13.56MHz
- Works with various locking mechanisms.
- Remote access capability with Spintly Fi-B Gateway
- Built-in RTC (realtime clock) for accurate time-keeping
- Choice of Smartphone, NFC card, or fingerprint enrollment

### SPINTLY ACCESS

The Spintly fingerprint-based access control solution is designed to enhance the attendance and access control experience of every employee in your organization using their fingerprint, smartphone, or NFC card. It combines a sleek hardware unit with a secure, and easy to use desktop/mobile app that allows seamless access to facility managers to manage accesses and attendance, view and download customized reports with a single click of the mouse.





# SMACC-FP Specifications



- Voltage Rating:** 9V to 30V
- BLE Version:** 4.2
- BLE Access Distance:** Adjustable (Default 5m)
- Colour:** Black
- Wiring Connection:** Pigtail
- Mounting:** Wall Mount
- Dimensions:** 55mm x 155mm x 35mm
- Housing Material:** ABS
- Operating temp:** -10 to +60°C
- Certifications:** FCC certified, RoHS compliant

## General Information

Model	SF-011
Current Draw-Peak	350mA
Current Draw - Average	150mA
NFC Tag Compatibility @ 13.56MHz	MIFARE Classic, MIFARE Ultralight, MIFARE Plus, MIFARE DESFire, NTAG 213, NTAG 215
NFC Read Range	20mm
Access Storage	32,000
Number of Mobile Users Supported	No Limit
Number of NFC Users Supported	8,000
Number of Fingerprint Users Supported	3,000
Fingerprint Identification Time	< 500ms

## Security

- AES 128-bit encryption on Bluetooth mesh communication
- TLS 1.2 for communication between Spintly cloud and gateway

## Applications

- Office Space
- Corporate buildings
- Attendance Management
- Boom barriers
- Flap barrier
- Turnstiles

## Wiring Codes

Red	+VCC
Black	GND
White	COMMON
Green	N.C
Blue	REX Input
Yellow	N.C
Orange	Door Sensor
Brown	GND