

Spintly Smart Door Lock

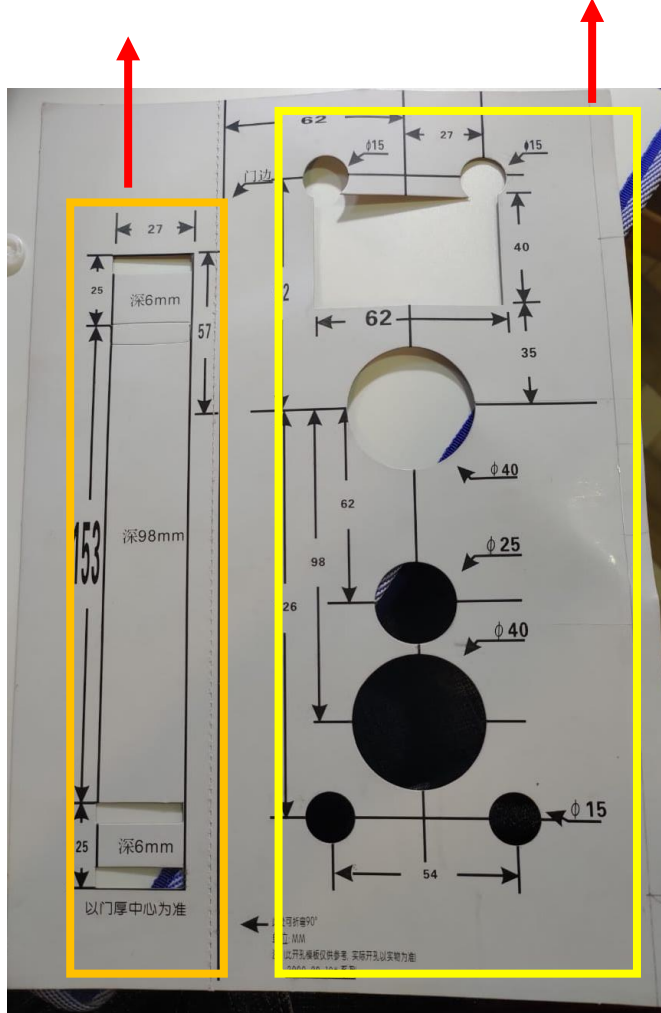
Installation Guide



Instructions

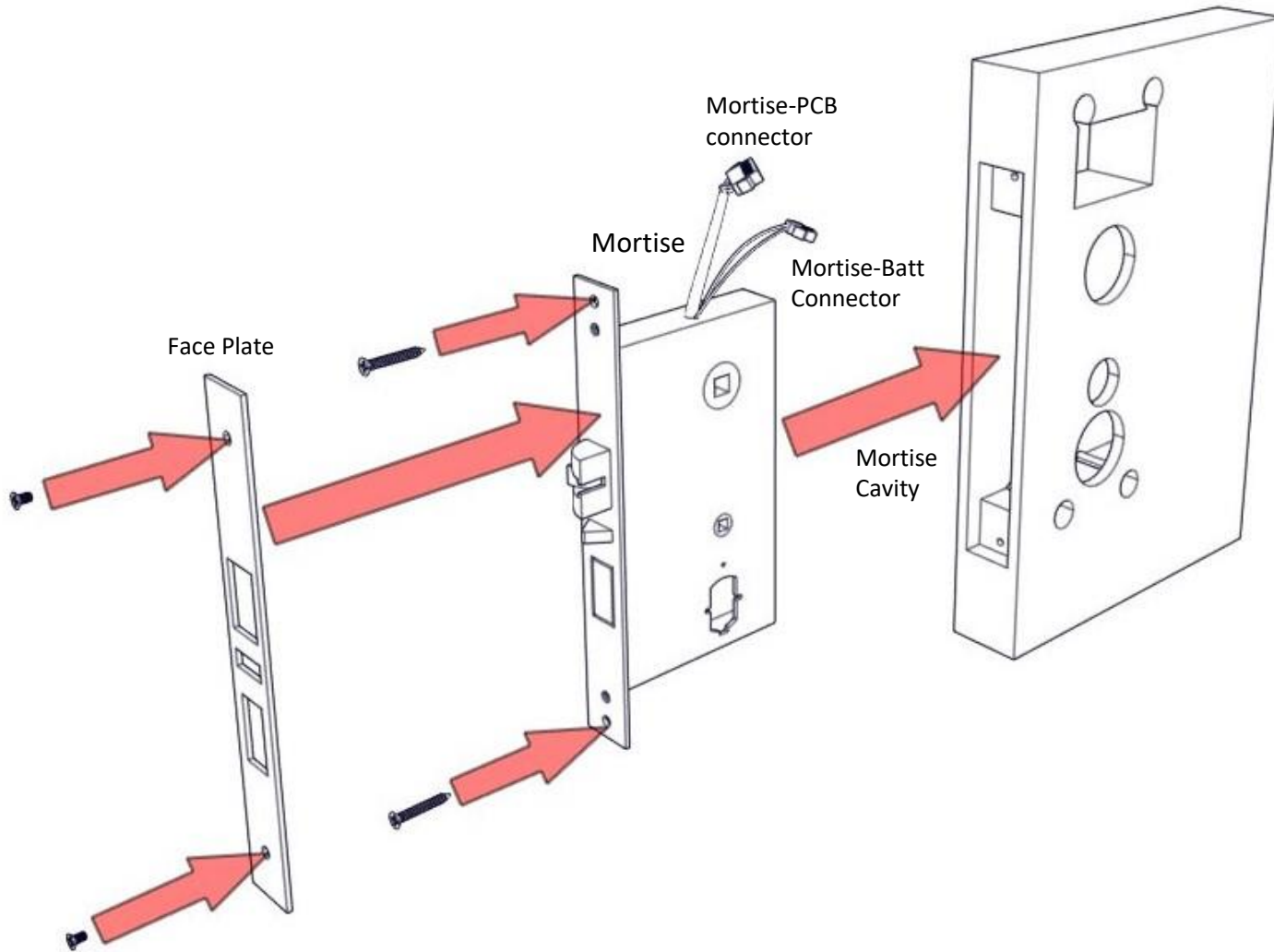
Mortise Cavity
Dimensions

Face cut holes, inside and
outside



- Use the Dimension Cut out Sheet to drill holes and mortise cavity into the Wooden Door.
- The Door Thickness required is minimum 35mm.
- The face cut holes will be drilled all the way through inside to outside.

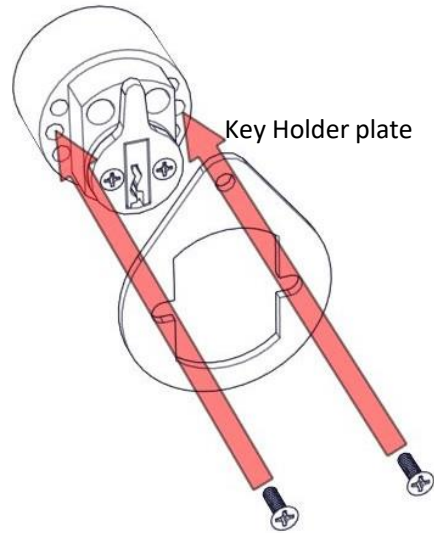
Step 1



- After the wooden cut out is done, place the mortise with its wires coming out on top inside the cavity and tighten with screws.
- Place the face plate of the mortise and tighten it with its screws as shown in figure.

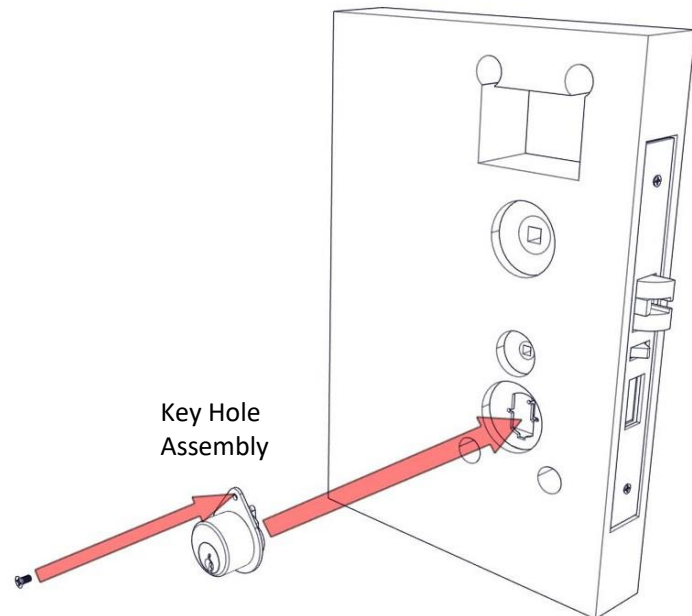
Step 2

Key Mechanism



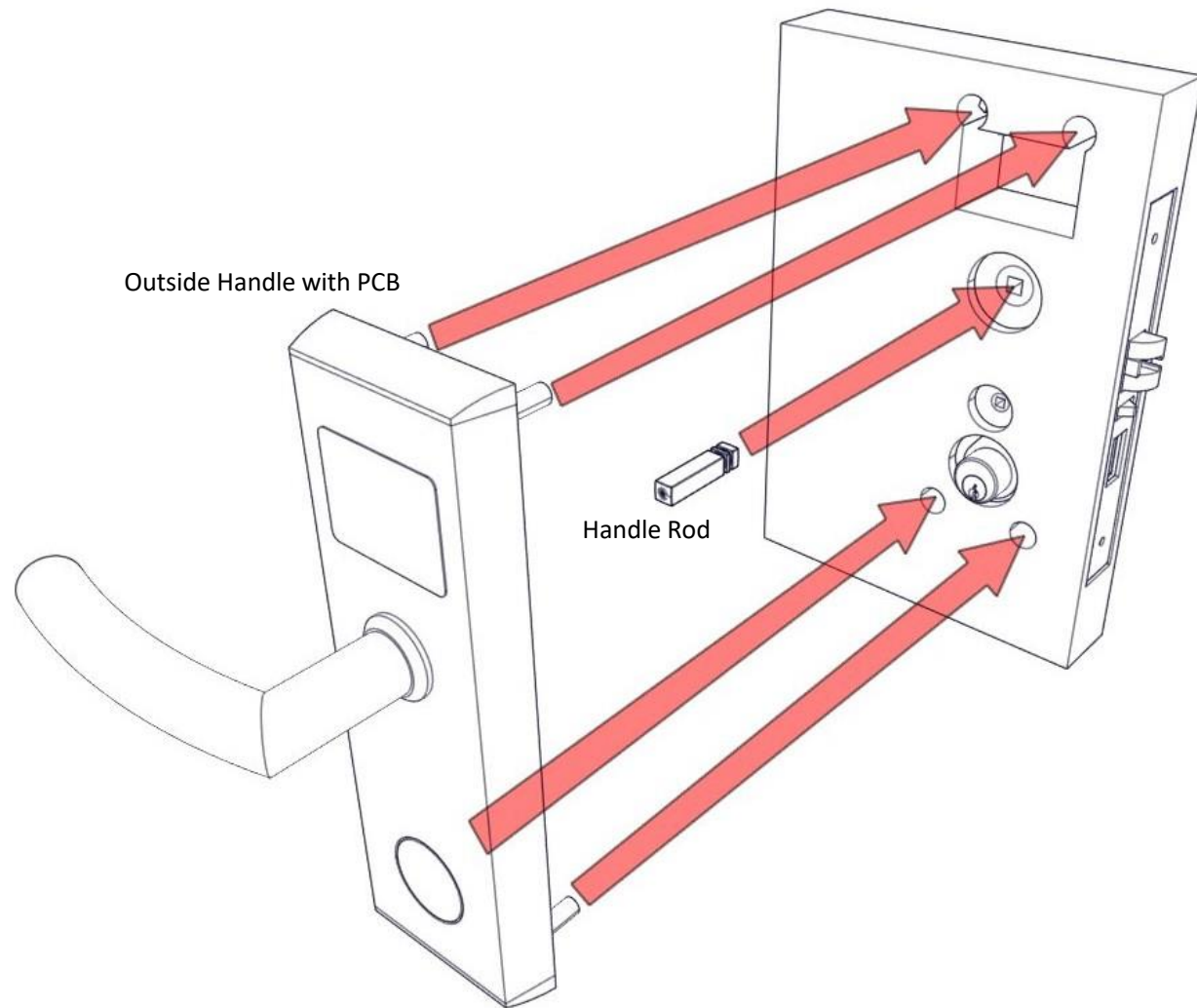
- Take the Key hole mechanism and mount the key hole holder plate with two screws as shown here

Step 3



- Take the complete Key Hole Mechanism assembly and mount it on the outside of the door with a screw provided in the box

Step 4



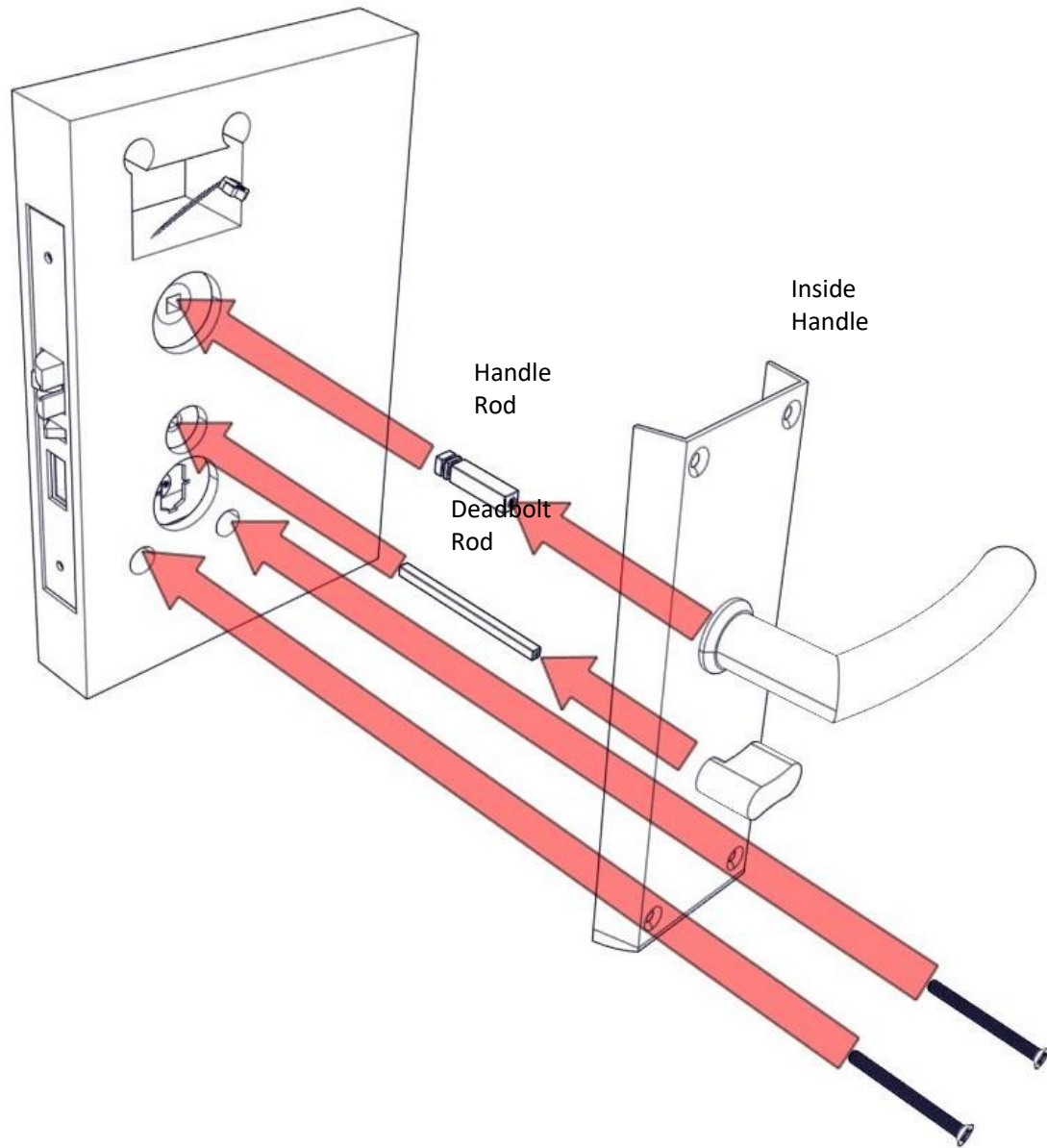
Mount the outside handle which has the PCB mounted on it with the handle rod inserted into the mortise as shown in the figure.

Make sure the handle sits evenly on the outside wood with all 5 holes properly aligned.

Connect the PCB connector with Mortise connector.

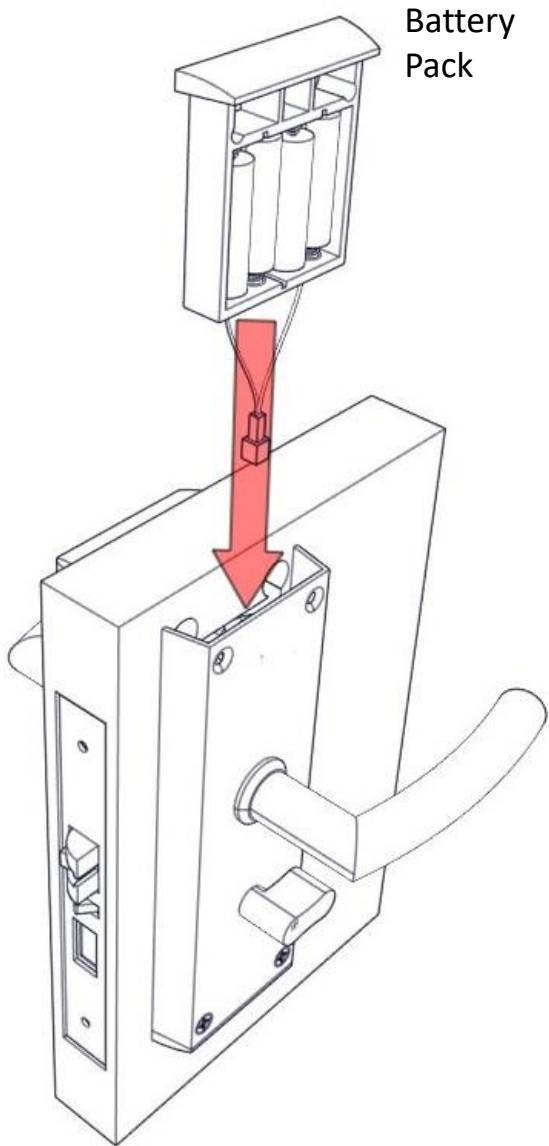
Hold this side in place while going onto the next step

Step 5



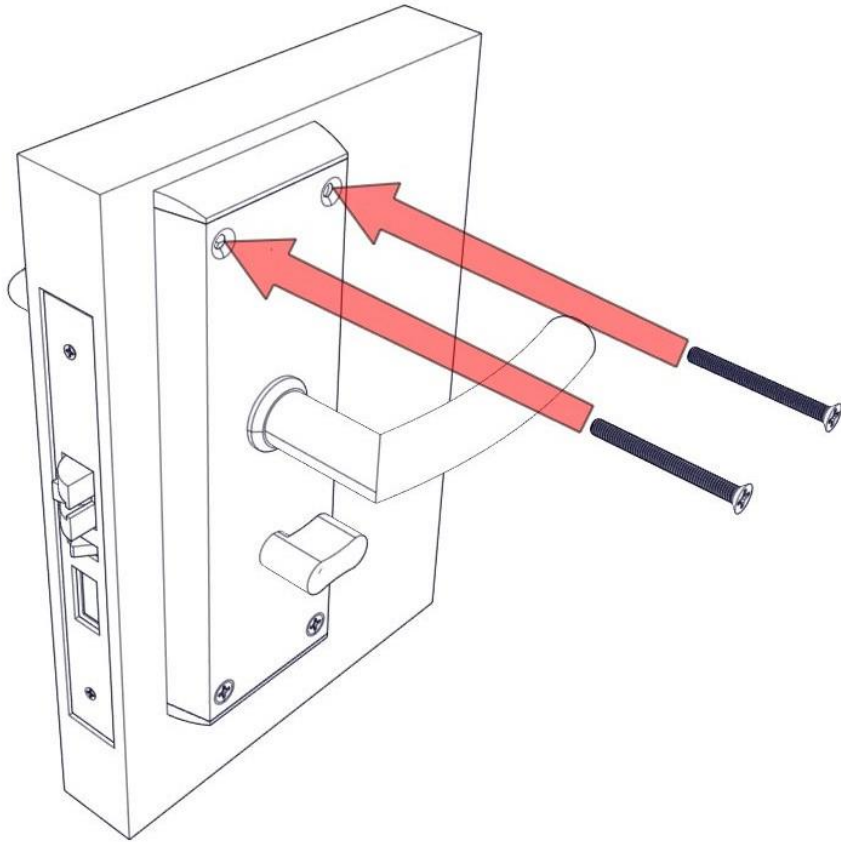
- Mount the inside handle on the other side of the door with inserting the inside handle rod and deadbolt rod into the mortise.
- Place the handle side evenly on the wood with both rods aligned in their respective holes.
- Screw in the bottom 2 screws to keep the inside and outside assembly in place.

Step 6



- Connect the Battery pack connector to the mortise connector and insert the pack with the cells facing outwards inside the handle cavity as shown in figure.
- Make sure the inside handle rotation moves the latch inside and the knob moves the deadbolt.

Step 7



- Finish the assembly by inserting the last 2 screws on top to secure the battery pack in place with the Handle.